

**INSTALLATION INSTRUCTIONS**

DESCRIPTION: GYTR® Billet Clutch Inner Hub  
PART NUMBER: BR8-E63C0-V0  
MODEL: '18~ YZ65



**⚠ WARNING**

Please read and understand these instructions completely before installation to avoid possible injury, or damage to the accessory or vehicle.

**WARRANTY INFORMATION:**

See your Yamaha dealer for a copy of the Genuine Yamaha Parts and Accessories Limited Warranty Statement.

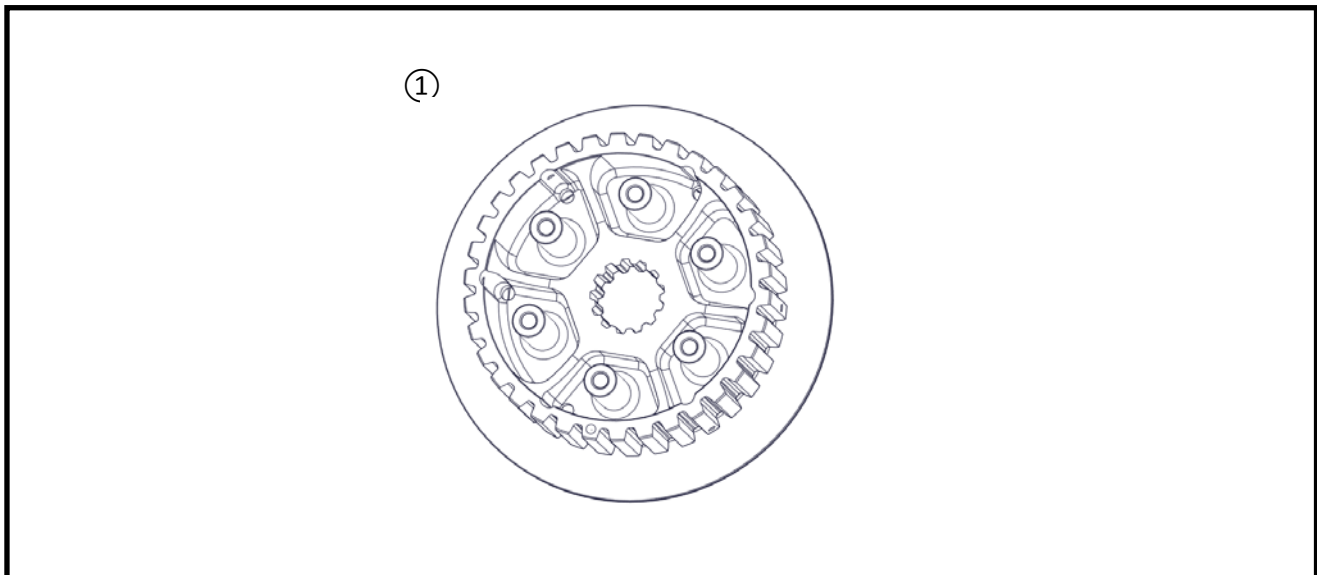
**NOTICE:**

Installation of this kit requires specialized tools, and training, as well as the Owner's Service Manual for the model. This installation should be performed by an authorized Yamaha dealer or a qualified mechanic.

**DEALER OR INSTALLER:**

These instructions contain important information for future reference and *must* be given to the customer.

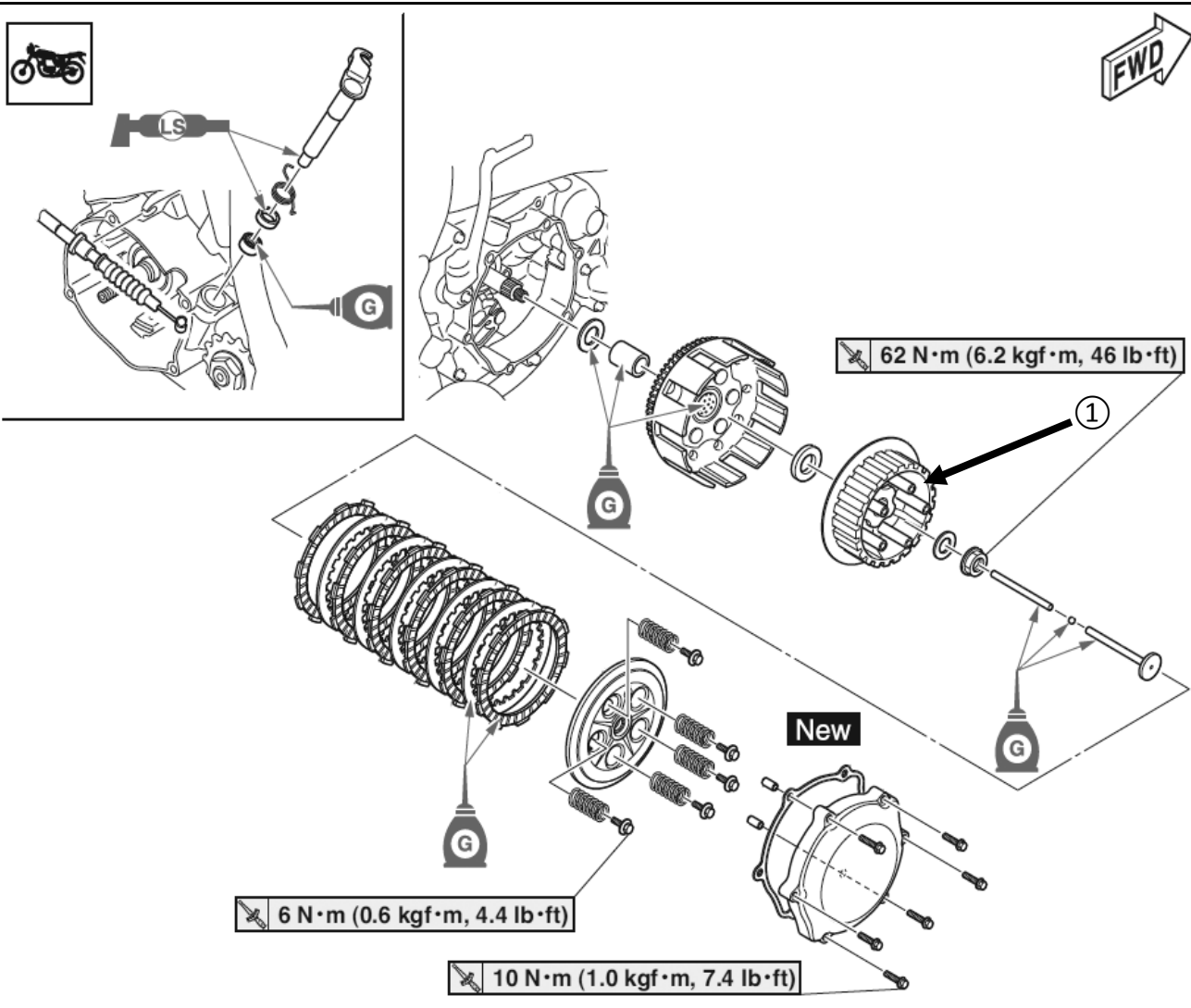
**PARTS LIST:**



No.	Part Number	Description	Qty
①	BR8-E63C0-V0	Billet Clutch Inner Hub	1

\* Part supplied with kit only and not available separately.

Fig. 1



**PREPARATION:**

- Stand the motorcycle on a secure and level surface, and drain oil.
- Alternately, lean the motorcycle on its left side and complete the installation without draining oil.
- Clean all mounting surfaces before beginning installation.

**INSTALLATION:**

Use the Owner's Service Manual as a guide for disassembly and reassembly. **Note:** You may need a new clutch cover gasket (p/n 5PA-15463-00-00).

**MAINTENANCE:**

Periodically check all hardware for tightness and re-torque as necessary.

**CARE AND CLEANING:**

Periodically check all hardware for tightness and re-torque as required.

**CUSTOMER SERVICE:**

For further information see your Yamaha dealer.

**ESTIMATED TIME TO INSTALL: 0.5 HRS**